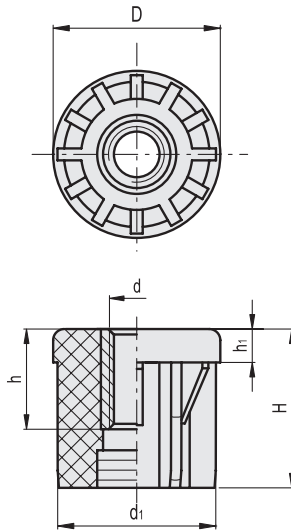


MATERIAL

Glass-fibre reinforced polyamide based (PA) technopolymer, black colour, matte finish.

STANDARD EXECUTION

Nickel-plated brass boss with threaded pass-through hole.



INCH

Code	Description	D	d	h	d1	H	h1	Tube external diameter	Tube internal diameter	Tube thickness	Tube size	Max. static load* [lbf]	⚖️
90320272	NDX.T-1-1/2x0,065-B 3/8-16	1.5	3/8-16	0.39	1.37	1.5	0.31	1.5	1.37	0.06	1- 1/2"	1120	0.07
90320273	NDX.T-1-1/2x0,065-B 1/2-13	1.5	1/2-13	0.39	1.37	1.5	0.31	1.5	1.37	0.06	1- 1/2"	1120	0.07
90320275	NDX.T-1-1/2x0,065-B 5/8-11	1.5	5/8-11	0.59	1.37	1.5	0.31	1.5	1.37	0.06	1- 1/2"	1120	0.07
90320276	NDX.T-1-1/2x0,065-B 3/4-10	1.5	3/4-10	0.79	1.37	1.5	0.31	1.5	1.37	0.06	1- 1/2"	1120	0.07
90320372	NDX.T-2x0,109-B 3/8-16	2	3/8-16	0.39	1.79	1.77	0.39	2.01	1.79	0.11	2"	1232	0.14
90320373	NDX.T-2x0,109-B 1/2-13	2	1/2-13	0.39	1.79	1.77	0.39	2.01	1.79	0.11	2"	1232	0.14
90320375	NDX.T-2x0,109-B 5/8-11	2	5/8-11	0.59	1.79	1.77	0.39	2.01	1.79	0.11	2"	1232	0.14
90320376	NDX.T-2x0,109-B 3/4-10	2	3/4-10	0.79	1.79	1.77	0.39	2.01	1.79	0.11	2"	1904	0.14
90320362	NDX.T-2x0,065-B 3/8-16	2	3/8-16	0.39	1.88	1.77	0.39	2.01	1.88	0.06	2"	1232	0.14
90320363	NDX.T-2x0,065-B 1/2-13	2	1/2-13	0.39	1.88	1.77	0.39	2.01	1.88	0.06	2"	1232	0.14
90320365	NDX.T-2x0,065-B 5/8-11	2	5/8-11	0.59	1.88	1.77	0.39	2.01	1.88	0.06	2"	1232	0.14
90320366	NDX.T-2x0,065-B 3/4-10	2	3/4-10	0.79	1.88	1.77	0.39	2.01	1.88	0.06	2"	1904	0.14

On request and for sufficient quantities.

* The max static load is the value above which the load applied to the element may cause some plastic material breakage, in particular conditions of use. Obviously, a factor that takes into consideration the importance and the safety level of the specific application must be applied to this value.